

**onTAP LICENSING**  
**OBTAIN A LICENSE**

---

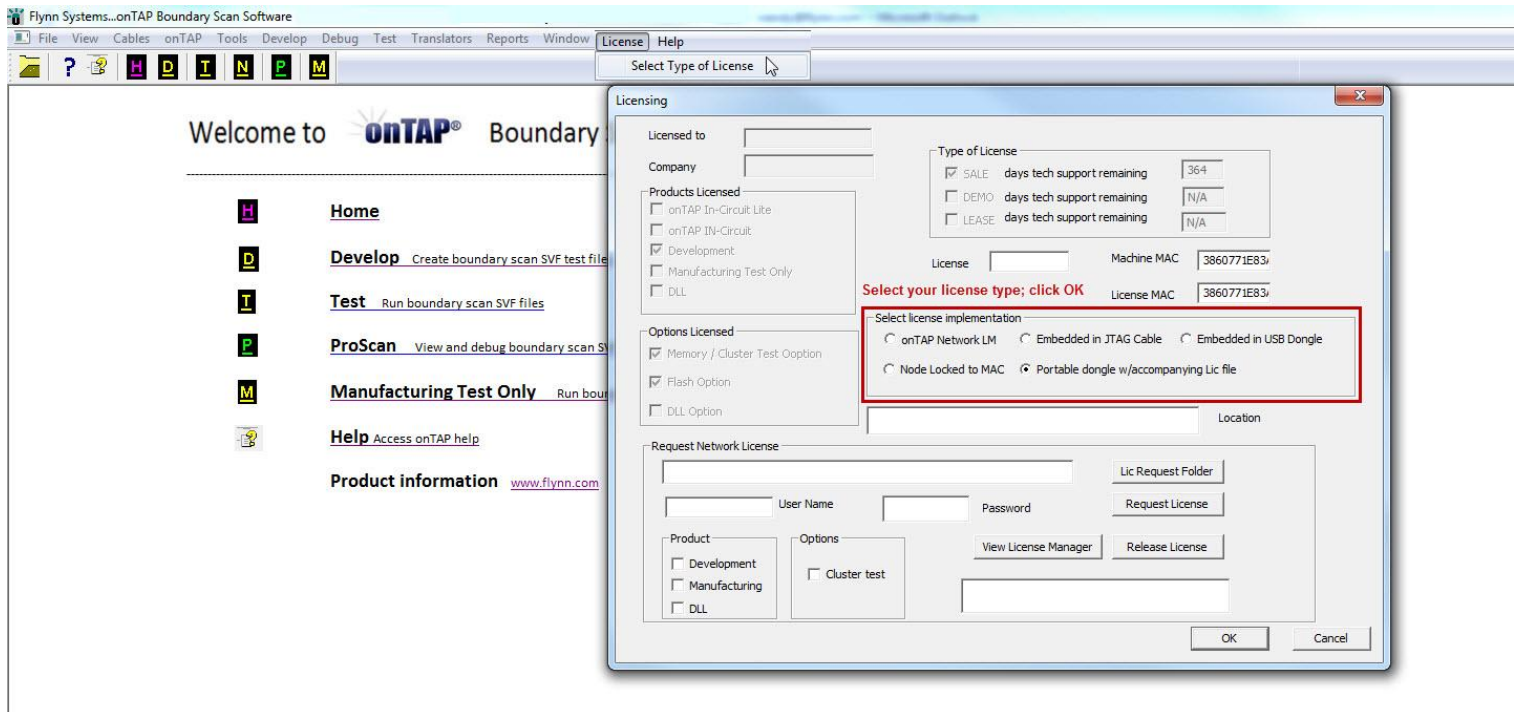
## Introduction

When onTAP is first started a popup message will explain how to obtain a license to enable onTAP. To enable a demo, simply email the license.txt file that will be created in the C:\Flynn Systems Corp\onTAP folder to license@flynn.com. A license file will be returned electronically which should be placed back in the same folder.

## License options

- A. Portable USB dongle
- B. Portable license embedded in USB dongle
- C. Portable license embedded in onTAP JTAG cable
- D. onTAP Network License Manager
- E. Node locked license

A license status and selection window can be opened from the License menu. If you are using a license embedded in a JTAG cable or a USB dongle, the related item must be selected in the *Select License Implementation* section. Current license status including days of technical support remaining on the license are also shown.



## DETAILS FOR INSTALLING AND UPDATING LICENSE

Status	Action
New Users without license-resident JTAG cables or dongles and without access to an onTAP network license	When running onTAP initially you will be asked to email the file C:\Flynn Systems Corp\onTAP\license.txt to <a href="mailto:license@flynn.com">license@flynn.com</a> . Please include your name, telephone number, and company name. A license file will be emailed back and it should be placed back in the C:\Flynn Systems Corp\onTAP folder.
onTAP Dual Port USB JTAG cable with the license resident in the cable is available.  The serial number on the cable must be higher than 70195.	Attach cable and run onTAP. Open the Licensing menu and <i>select Embedded in JTAG Cable</i> . When starting onTAP for the first time, ignore any initial requests to email a license.
onTAP license key (dongle) with the license resident in the key is available.	Attach dongle and run onTAP. Open the Licensing menu and <i>select Embedded in USB Dongle</i> . When starting onTAP for the first time, ignore any initial requests to email a license.
Update an onTAP Dual Port USB JTAG cable with the license resident in the cable.  The serial number on the cable must be higher than 70195.	Obtain an update file from <a href="mailto:sales@flynn.com">sales@flynn.com</a> and place in the C:\Flynn Systems Corp\onTAP folder. The filename will be license_jtag_<cable_serial__number>.lic
Update onTAP license key (dongle) with the license resident in the cable	Obtain an update file from <a href="mailto:sales@flynn.com">sales@flynn.com</a> and place in the C:\Flynn Systems Corp\onTAP folder. The filename will be license_dongle_<dongle_number>.lic
Update a node-locked license.	Contact <a href="mailto:sales@flynn.com">sales@flynn.com</a> with license number.
Insert a license into an onTAP Dual Port USB JTAG cable.  The serial number on the cable must be higher than 70195. Node locked licenses cannot be upgraded to portable.	Email the file license_jtag_<cable_serial_number>.req to <a href="mailto:sales@flynn.com">sales@flynn.com</a> and include request information.
Client on the onTAP Network License Manager	<ol style="list-style-type: none"> <li>1. Obtain a user name, password, and path to the License Request Folder from the network license administrator.</li> <li>2. Open Help About in onTAP, enable Network licensing, enter user name and password, and browse to the License Request Folder.</li> </ol>