

onTAP True Parallel Testing

Ontap_parallel.exe can be used to simultaneously run test suites on multiple PC boards using the onTAP DLL. Parallel board testing must be enabled for the DLL license. Testing is fastest on a multiple processor PC, particularly where one core processor is available for each board. For example if four PC boards are being tested in parallel, then a quad core processor is recommended so that the time to test four boards is about the same as that required to test one board.

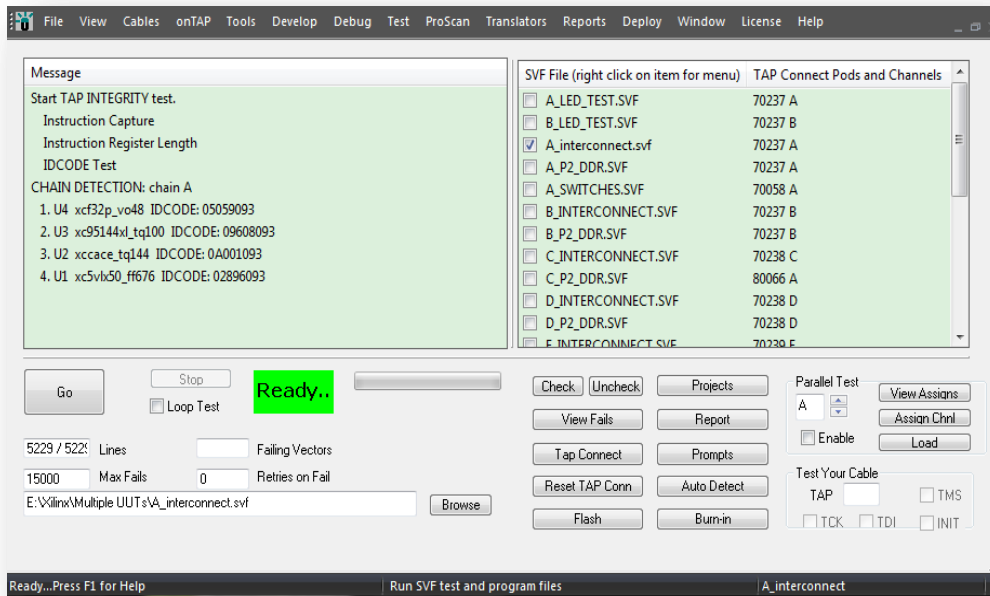
Procedure for Running Tests in Parallel

Create a separate folder for each board to be tested and in the folder place all of the tests that will be run for a board.

Launch an ontap_parallel.exe for each board to be tested, and for each instance of ontap_parallel.exe, browse to a folder with the tests for a designated board. In the SVF Files list, check the SVF files that will be run for the board.

Highlights: Parallel Testing

- Run tests in parallel from your Windows PC
- Perfect for high volume manufacturing environments.
- Highly automated
- Run reusable, reliable, automatic tests
- Test large panels of multiple chains



Return to the first instance of ontap_parallel.exe and check the boards that you wish to run in the Board list.

Click Run Checked Board Folders to run the tests for one or more folders. Test results are left in the .test and .fail files for each test in each folder. The test and diagnostic messages can be seen on the screen by selecting, as opposed to checking, a board and then selecting an SVF file.